

# Studio Foce

## Tech Specs & Equipement List



**Resp. Tecnica**  
**Matteo Morello**  
roburent76@gmail.com  
+41(0)79 543 63 80

# Audio System

## PA

2x Nexo GeoS1210 + 1x GeoS1230 each side  
2x Nexo RS15 Subwoofer each side  
1x Nexo RS18 Center Subwoofer

## Console

Yamaha CL3  
Yamaha RIO 32-24 Digital stage box

## Monitor

8x EV TX1122FM  
1x EV ZX1 Sub

## Player

1xTOSHIBA VHS + DVD + USB Player (HDMI OUT)  
1xTascam CD Player  
2x Neumark CDJ  
2x Technics MKII Vinyl

## Microphone

1x SHURE Beta 52  
1x SHURE Beta 91  
3x SHURE Beta 98AMP  
1x Audix D6  
1x Audix i5  
2x Audix D2  
1x Audix D4  
3x AKG 451  
4x SM-58  
6x SM-57  
2x SM-58 Radio Mic

## DI

4x BSS AR133  
2x Behringer Super DI  
4x Behringer Stereo DI



# Light System

## Light

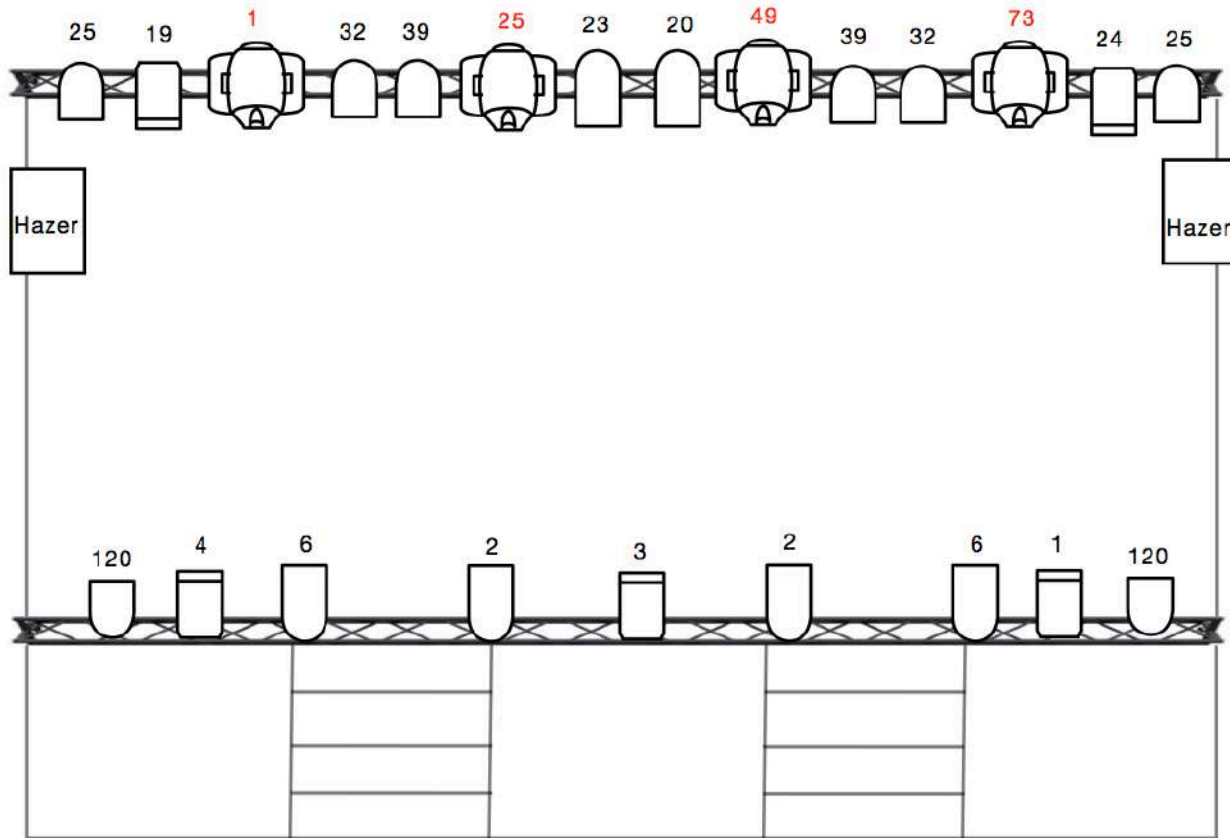
6x Showtech Phantom 75 Led Spot (2 are not figured on the plot)  
8x Techlumen LED RGBW PAR  
2x PC 1KW  
2x ETC Sago 1000w 36°  
5x PC 500W  
6x PAR 64  
2x Hazer Machine

## Console

ETC Smartfader



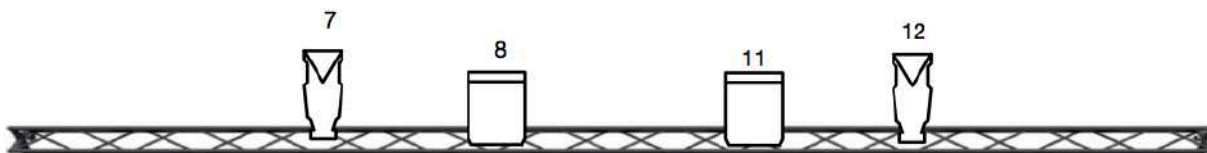
# Light Plot + Adress



SALA Tesla Lamp 13+14  
 Entrata Tesla Lamp 17

	Showtech Phantom 75 LED SPOT 14CH
	Techlumen Stage Color 7CH RGBW
	ETC Sago 1000w 36°
	PC 1Kw
	PC 500w

\*The Phantom 75LED are on a 2<sup>nd</sup> universe



# Video System

Nec PX750U (7500ANSI)

HDMI-Cat5 Connection

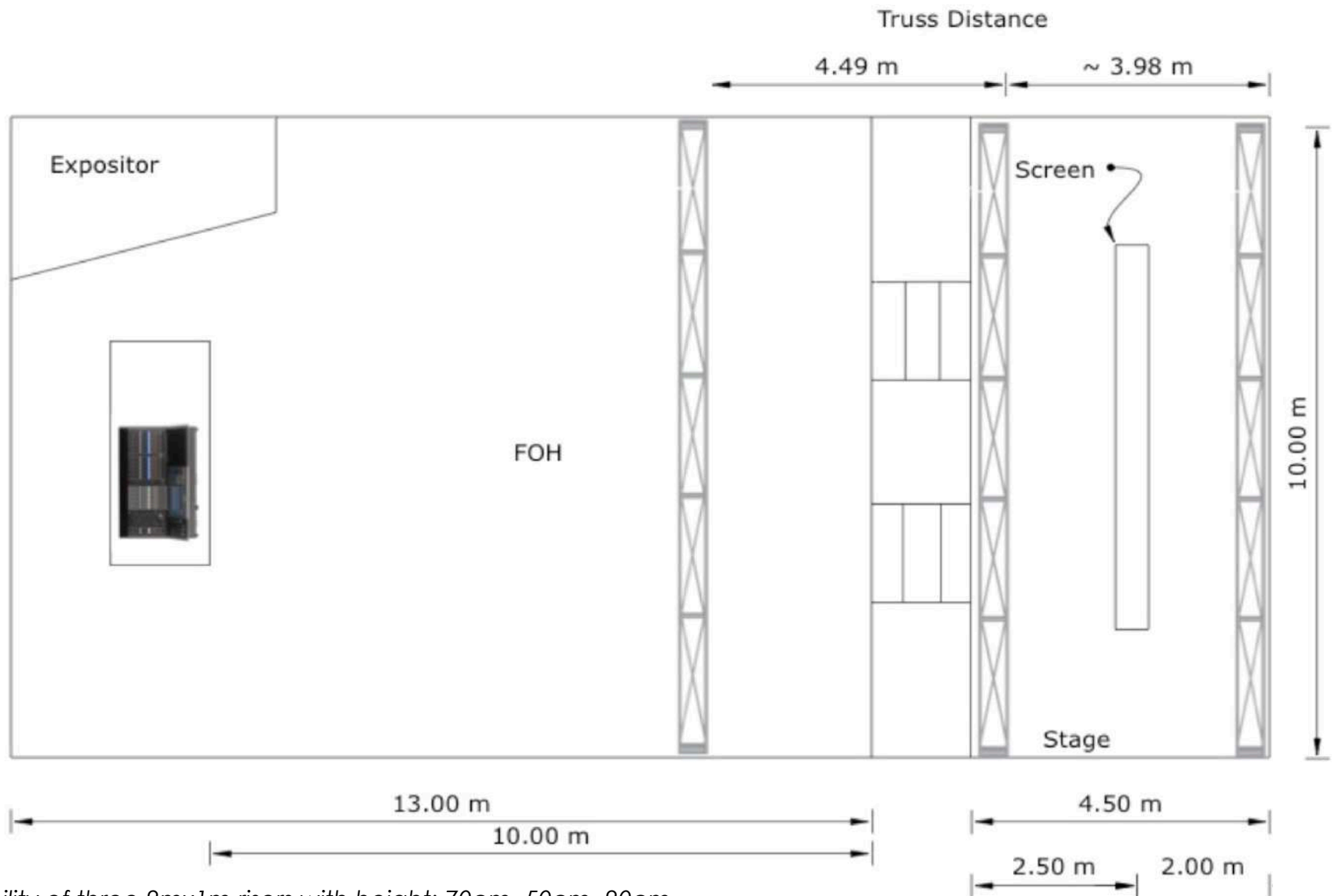
VGA-Cat5 Connection

White Screen 6m x 4.5m

Tascam DV-D01U DVD Player



# Logistics



\*Availability of three 2mx1m risers with height: 70cm, 50cm, 20cm